

The study visit arrangement on the information network in the Netherlands for education, training and employment

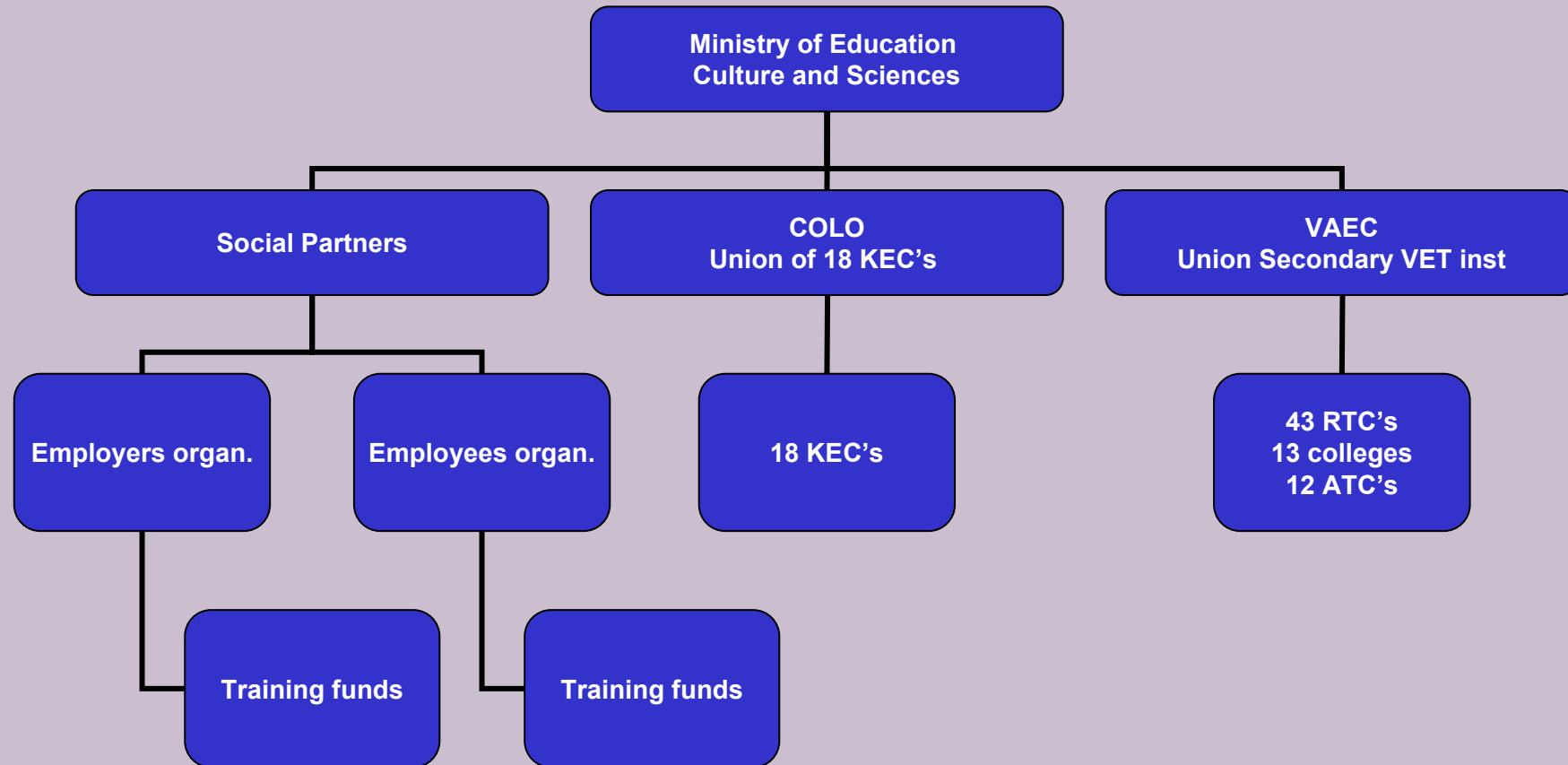
Gerry van Zantvoort,
Fontys University of Applied Sciences, NL



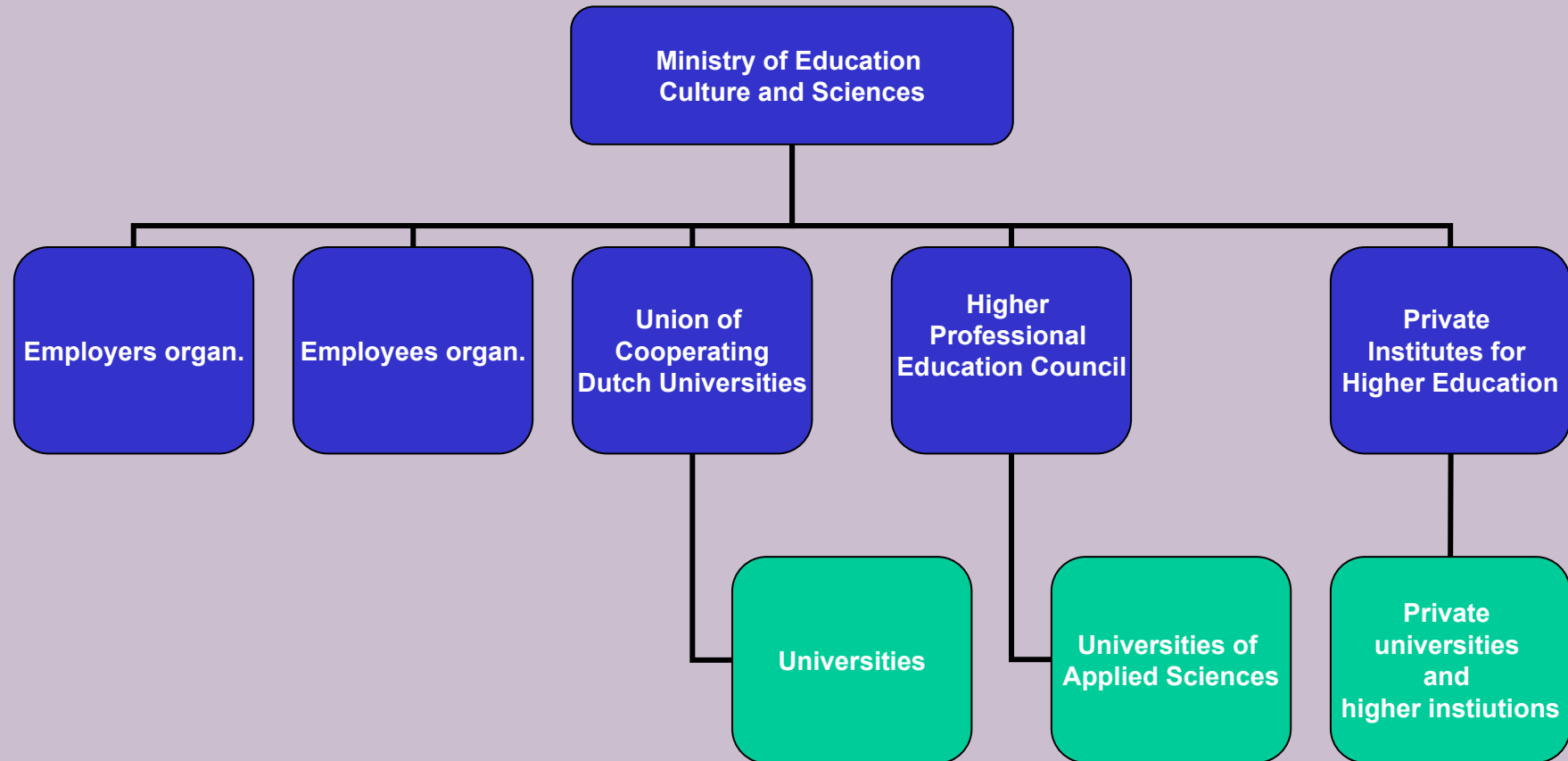
The general approach

- View the Dutch context in education, training and employment by roles for government and social partners
- View the vertical line from information production/collection to modelling and decision making for policy, strategy and operation

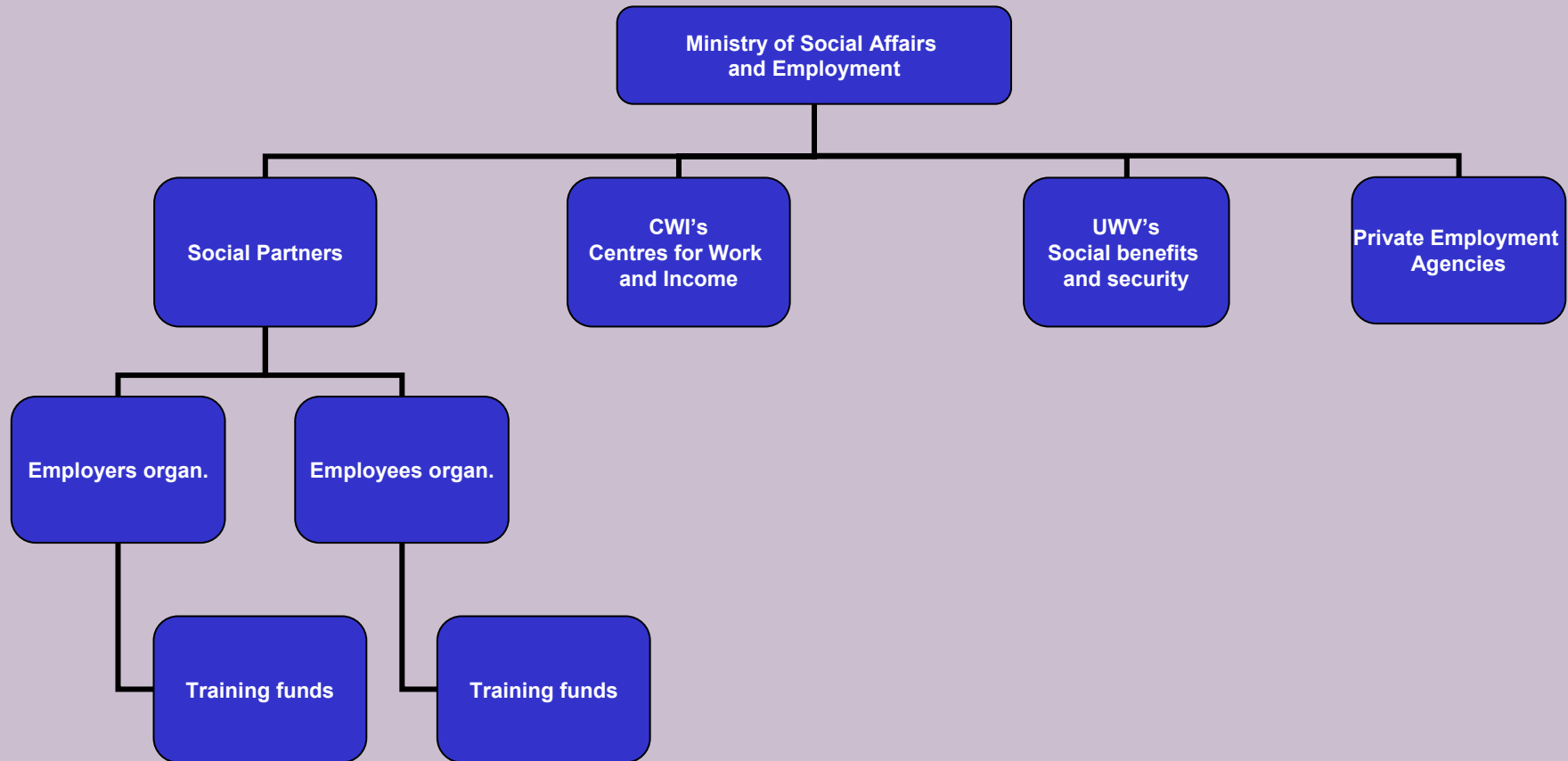
Stakeholders in VET



Stakeholders in Higher Education



Stakeholders in Employment and Social Security





Administrative framework

- National:
 - ministries of education, agriculture, economics, social affairs and employment and justice, umbrella organisations, support and advice, exam institutions, social partners, finance and control, inspectorate
- Sectoral:
 - Social partners, national knowledge expertise centres
- Regional/local:
 - Schools, private training centres, municipalities, social partners

Financing of Human resource development

